



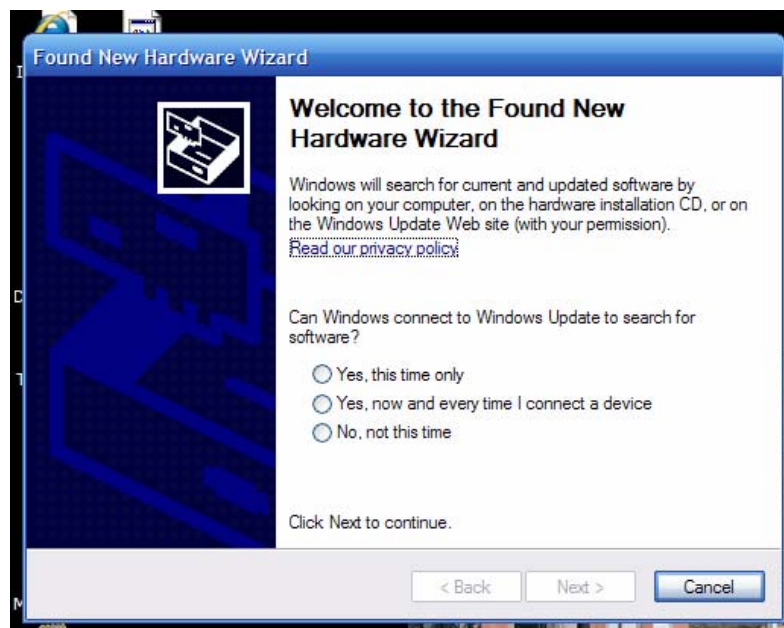
**RS485 to USB Software
Installation: Windows XP**
PN: 13376955

DATE: 9/13/2006

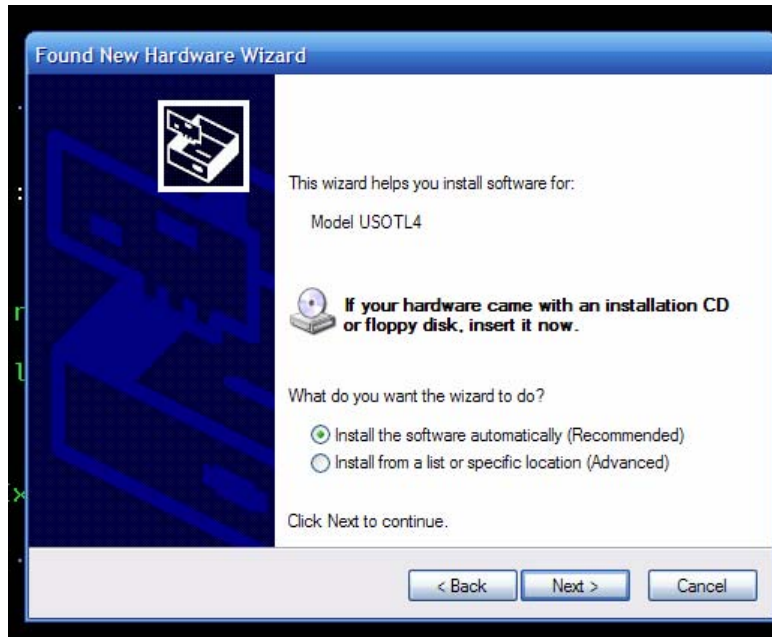
MODELS: All units equipped with TEC2000 or TEC3000 controllers

NOTE: This installation can be done without a TEC2000 or TEC3000 present

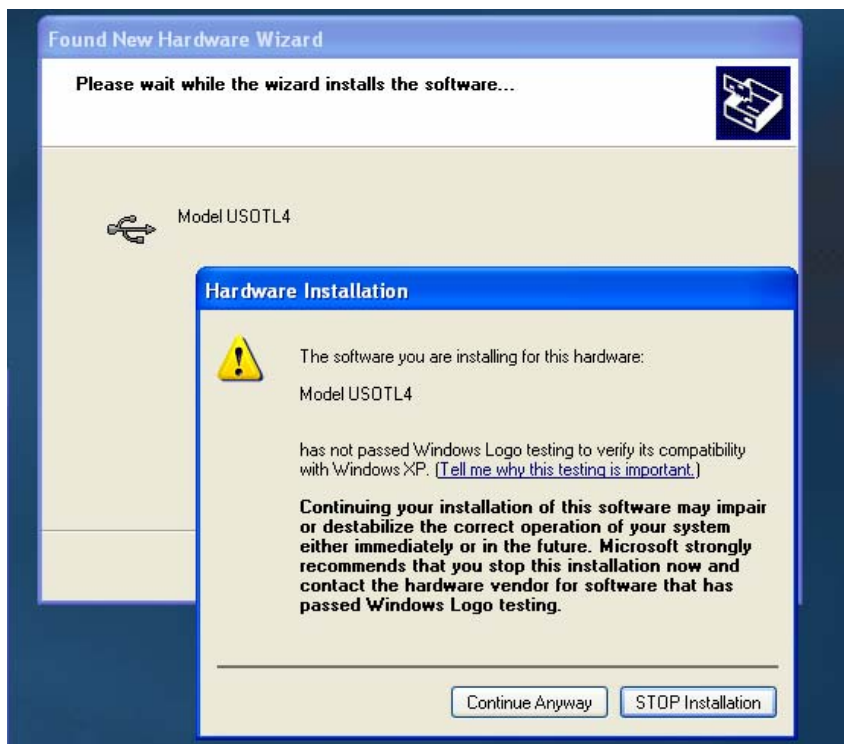
1. Insert Driver CD included with your RS485 to USB adaptor into your CDROM drive.
2. Wait several seconds and if any boxes pop up, close them.
3. Attach square end of USB cable to ULinx™ Isolated RS-422/485 USB Adapter and plug the rectangular end of the USB cable into a free USB port on your computer.
4. If you see a screen like the one below, click circle beside “No, not this time” and click next to continue to the next screen. If not, you should see the screen in step 5.
5. Go to step 5.



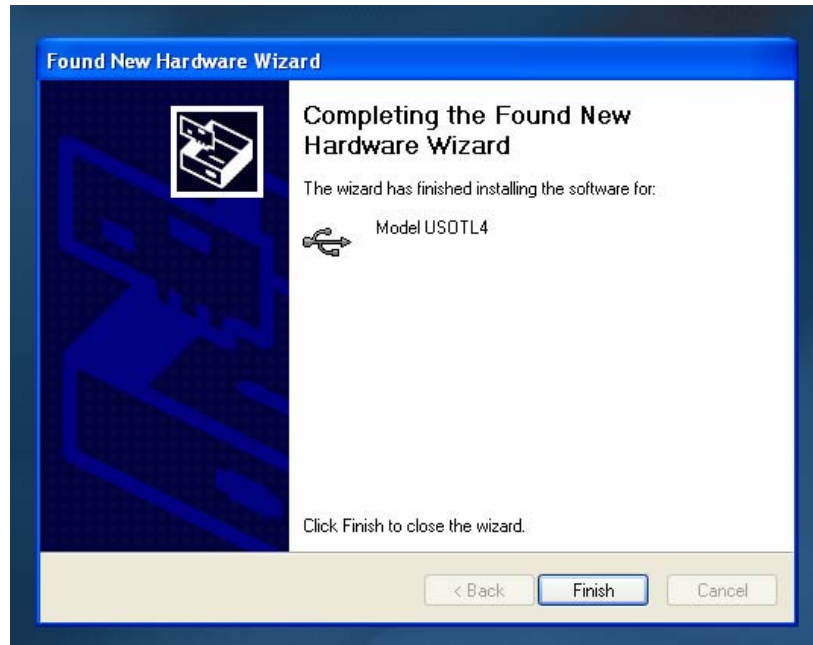
5. On the next screen click the circle beside “Install the software automatically (Recommended)”.



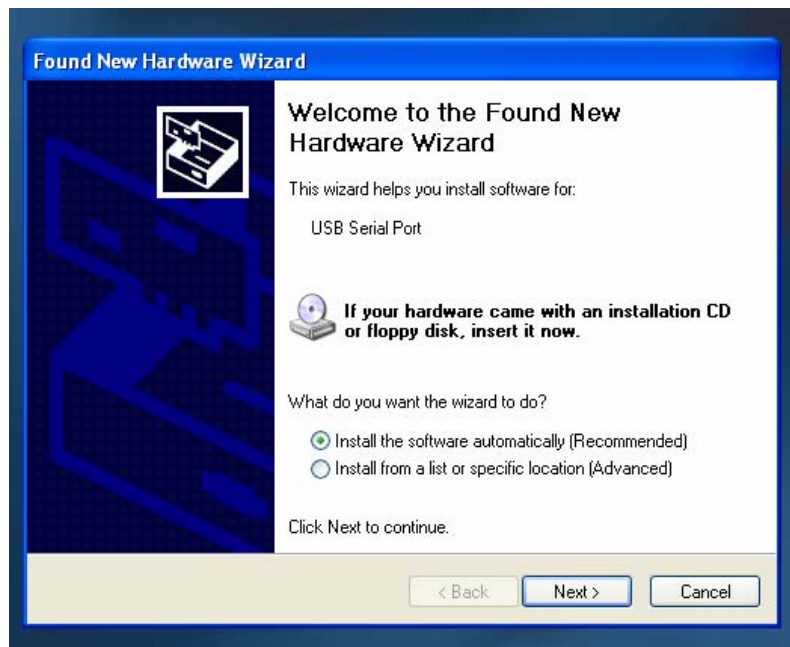
6. A new window will pop up informing you that the software you are installing may not be compatible with Windows XP. In this case, the software is, but Windows does not recognize it. Click the “Continue Anyway” button to ignore the warning and continue with installation.



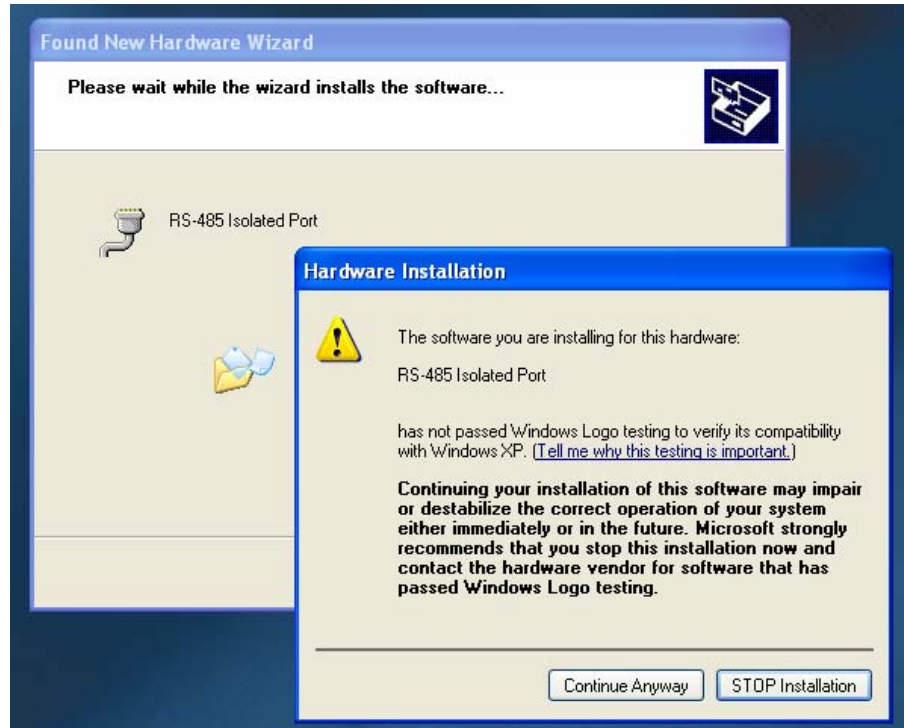
7. Windows will attempt to install the software and when it is finished (it may take a few minutes), you will see the screen below. Click “Finish” to finish this portion of the installation.



8. Another “Found New Hardware” window will appear as Windows installs the USB serial port on your computer. Make sure that the circle beside “Install the software automatically (Recommended)” and click “Next” to continue.



9. You will be prompted in the same way as before telling you that the software you are installing may not be compatible with windows. The same as before, you can ignore this message and click “Continue Anyway” to continue with the installation.



10. Windows will attempt to install the software and when it is finished (it may take a few minutes), you will see the screen below. Click “Finish” to finish the installation.

