



MVE Tech Tips



February, 2009

Chart, Inc. BioMedical Group Has Moved

For those who are not aware, the BioMedical Group, once located in Marietta, moved to Ball Ground, Georgia on January 12, 2009. We made a smooth transition and are comfortably settled into our new home. Our new address is:

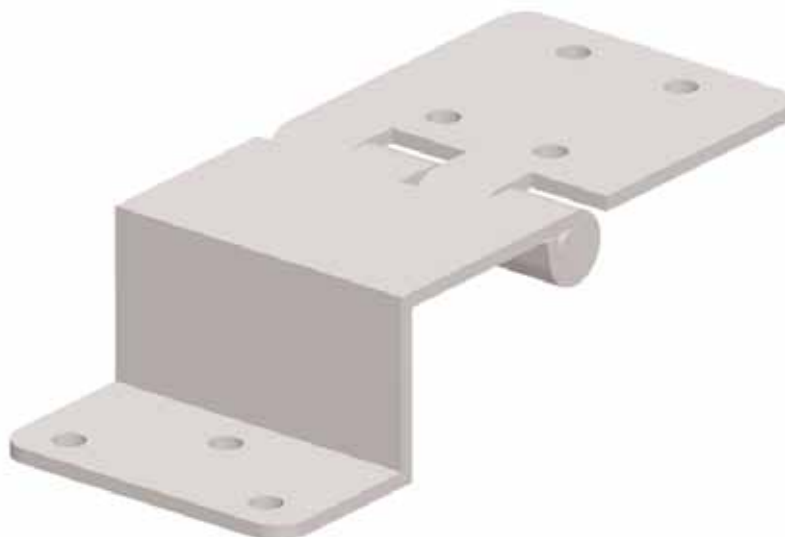
Chart, Inc. – BioMedical Group
2200 Airport Industrial Dr.
Suite 500
Ball Ground, GA 30107

The new direct lines for customer service have changed and are listed below. Fortunately, the toll-free number for customer and technical service has remained the same, 1-800-482-2473.

Customer Service Phone: 770-721-7759
Customer Service Fax: 770-721-7758

New Hinge on Protective Shipping Carton

The protective shipping carton has a new and improved hinge as of October 1, 2008. Unlike the previous hinge, there are no welded parts. The new hinge is one piece, very durable, and made of 0.09" steel. The new part number is 13960393.



Cab-O-Sil Inserts for Canisters

There are some discrepancies regarding the size of the Cab-O-Sil inserts for vapor canisters. The outer diameters of the inserts are as follows:

Size of Insert (inches)	Associated Unit(s)	Part Number
1.50	SC 20/20, SC 33/26, XC 33/22, XC 43/28, SC 3/3, SC 8/5, SC 11/7, XC 10/4-9, Spectrum 20, SC 20, XC 20	10736409
1.84	XC 32/8, Spectrum 20+	10736417
2.81	Spectrum 34, XC 34/18, XC 10/4-6, XC 47/11-10, XC 21/6-9	10736425
3.38	Spectrum 34+, XC 22/5	10736433
4.0	XC 47/11-6	10736441
3.19	XC 20/3V	11027719

Temperature Probe Sealant

We have run out of the 0.5 oz tube of temperature probe sealant (PN 13791518) that is standard issue with all freezers. A 2.5 oz tube of GE silicone sealant will be substituted. We will resume the use of the 0.5 oz tube as soon as it becomes available, the estimated time is 4 weeks.

New Cryosystem Cork/Cover

Cryosystems will no longer have an aluminum cover. Effective July 10, 2008 the cover is now being made of composite material.

PLS Lids – The part numbers are as follows:

13440646 – Cryo-System 6000 Cork/Cover

13674733 – Cryo-System 2000 Cork/Cover

Cryo-System 4000 Cork/Cover



Customer/Technical Info

For ordering information contact

Customer Service:

Europe: +44-1344-403100

USA & Canada: 800-482-2473

Asia/Australia: +61-297-494333

For technical information contact

Technical Service:

UK & Europe: +44-1344-403100

Gary Call gary.call@chart-ind.com

USA & Canada: 800-482-2473

LaDahvia Flournoy: ladahvia.flournoy@chart-ind.com

Ramone Gonzalez: ramon.gonzalez@chart-ind.com

Johnny Greene: jonathan.greene@chart-ind.com

www.chartbiomed.com