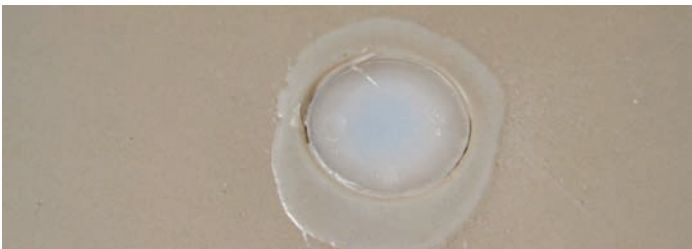


Plastic Shipping Container Vent

If you find a bubble at the bottom of the plastic shipping container, please do not be alarmed. Every container has a vent hole at the bottom due to the roto-molding process, which is later filled with a resin and takes the shape of a bubble.



Controller Upgrade Kit Testing Changes

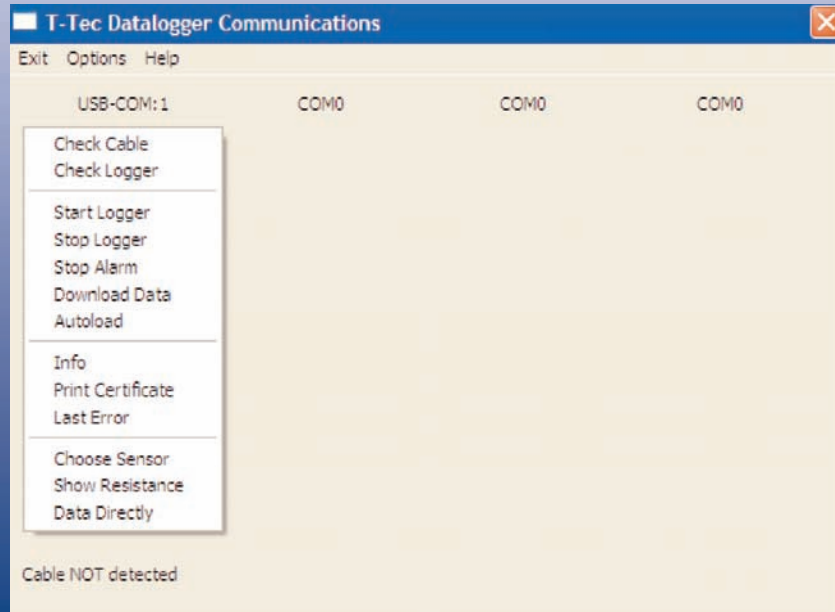
In May 2009 Tech Tips we announced every upgrade kit will be tested and calibrated on an identical freezer model before shipping out to a customer's site. Now instead of pre-setting the controller, it will be function tested only. The previous method increased lead times and did not account for variations between freezers.

Racks and Boxes - Storing in Vapor

When storing in vapor by keeping the bottom stages of the racks open, please use caution. Due to the large amount of force exerted by the weight of the samples and boxes, deformation of the rack can occur if care is not used. To prevent this, please use empty boxes as place holders in the stages you would normally leave open.

MVE Datalogger Tip: Autoload vs. Download

After logging, to download the data into a graph, the user has two options: Download Data or Autoload. If you only have one logger plugged into the computer, use the Autoload option; which will automatically retrieve, convert, and import the data into a graph. Download Data can be used if you have multiple loggers plugged into the computer. It allows the user to save the data file of one logger and move on to the next.



NEW TEC 3000 Manual

Announcing the New TEC 3000 Technical Manual. It is now available online and can be found in the TEC 2000/3000 Resource Library, <http://www.chartbiomed.com/tec2000.cfm?>

Customer & Technical Info

For ordering information contact

Customer Service:

Europe:	+44 1344 403100
Australia/New Zealand:	+61 2 9749 4333
US Toll Free:	800.482.2473
Asia/ Pac Rim:	770.721.7759
The Americas:	770.721.7759

For technical information contact

Technical Service:

Europe:	
Phone:	+44.1344.403100
Email:	gary.call@chart-ind.com
US Toll Free:	800.482.2473
Phone:	770.721.7759
Email:	techservice.usa@chart-ind.com
Asia/Pac Rim	
Phone:	770.721.7759
Email:	techservice.usa@chart-ind.com

www.chartbiomed.com