

TEC 2000 EPROM and Gas Bypass

Adjusting the gas bypass time delay requires a TEC 2000 controller equipped with a 1.7 or higher EPROM. There is no ASCII command; this value can only be adjusted in the maintenance menu. If your controller does not have this screen in the maintenance menu, then you probably have a lower version EPROM. Evaluating the circuit board and locating the EPROM can verify this. The version will be written or printed on the component label. Unfortunately, Chart no longer offers EPROM upgrades.

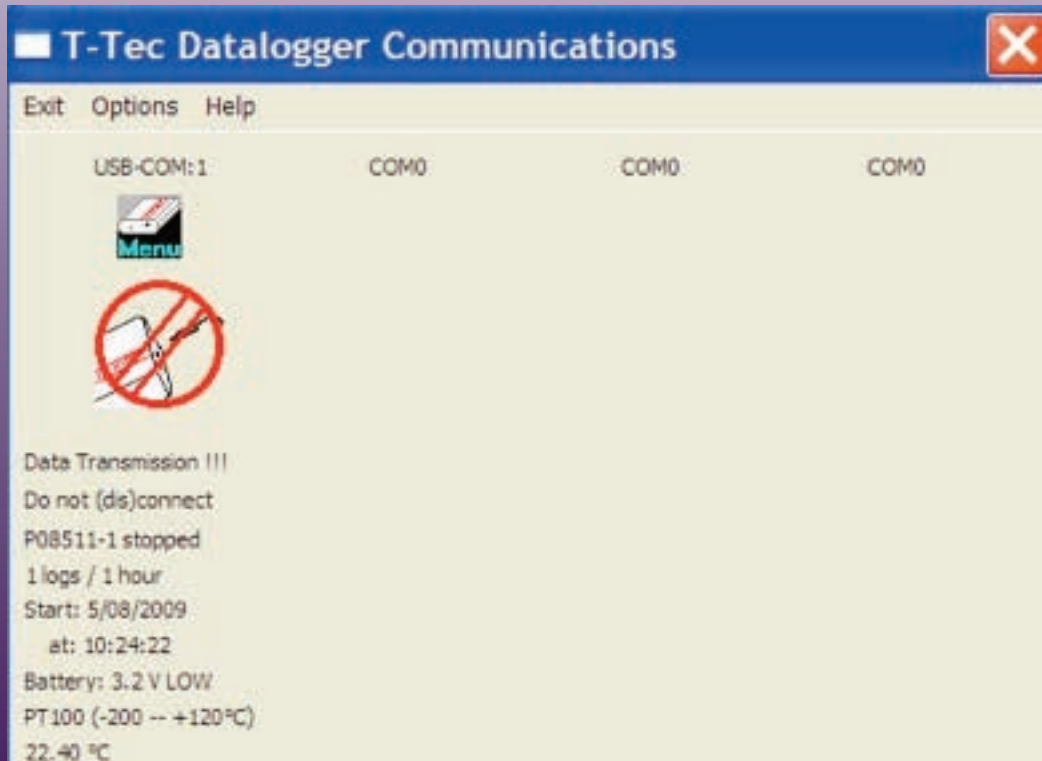
MVE 800 Series Turn Tray

The turn tray on all 800 Series with pie shaped dividers will look slightly different. The turn tray will now use laser cut components for more precise fit and finish. Additionally, all turn trays on the 800 series (including the -150 series) will be made of aluminum. The thermal performance of the -150 freezers will increase slightly, making their top box temperature colder than the previous design.



MVE DataLogger Tip- Data Directly

The data directly option allows the user to retrieve measurements directly from the MVE Datalogger every three seconds. This feature not only shows the current temperature, but it also relays the logging period, when logging began, and the battery voltage. This option can be selected by pressing the Menu Icon in the Communications program. The Data Directly screen is shown below.



Customer & Technical Info

For ordering information contact

Customer Service:

Europe:	+44 1344 403100
Australia/New Zealand:	+61 2 9749 4333
US Toll Free:	800.482.2473
Asia/ Pac Rim:	770.721.7759
The Americas:	770.721.7759

For technical information contact

Technical Service:

Europe:	
Phone:	+44.1344.403100
Email:	tseurope@chart-ind.com
US Toll Free:	800.482.2473
Phone:	770.721.7759
Email:	techservice.usa@chart-ind.com
Asia/Pac Rim	
Phone:	770.721.7759
Email:	techservice.usa@chart-ind.com

www.chartbiomed.com