



MVE Tech Tips



A monthly publication for the MVE Biological Products Distributors

June 2002

NEW FACES

Our newest Bio-Medical Customer Service team member is Ann Reiter. She is not a new face to CHART having 6 years of experience in the Restaurant CO2 division as a customer service rep and for the past 3 years as Inside Sales. Ann's past experience in customer service is a plus and she is ready to help you with your questions and sales orders. You can reach Ann, Mary or Marae at 1-888-683 2796.



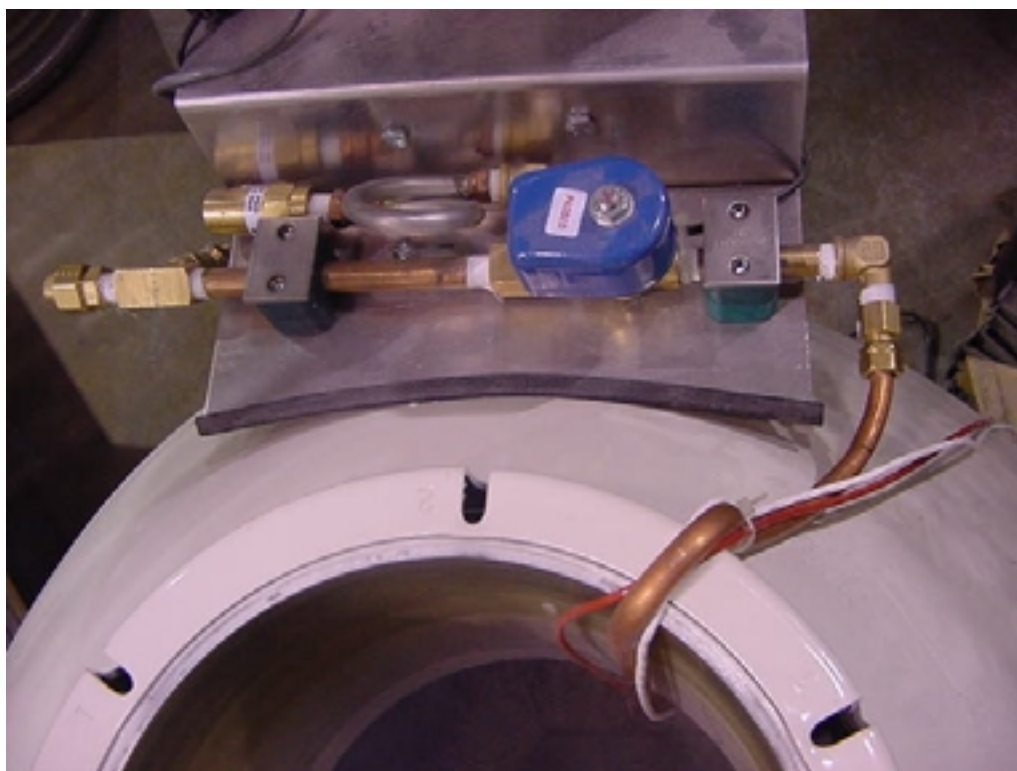
NEW PRODUCTS – FULL AUTO KITS

MVE/Chart Industries is introducing another new product for our bio-medical customers. We now have a drop in version of a fully automated filling system for the CryoSystem 6000 and 4000 dewars. The full auto kits are field retrofittable and can be easily added to any existing Cryosystem 4000 or 6000. These full auto systems can be supplied with any 22 psi liquid nitrogen supply source and can have multiple units connected to a single supply line.

The part numbers for each of the "drop in" kits are PN 11694765 for the CryoSystem 6000 and PN 11728179 for the CryoSystem 4000. Each kit includes the plumbing assembly, controller, fill tube, and modified cork/cover. The fill system is completely assembled to the mounting brackets. The installer only needs to attach the bracket, connect the fill tube and liquid supply, and the system is ready to operate. List prices for the kits run \$1280.00 for each kit. When ordering a complete system you will need to list the Fnl Cryosystem dewar, the full auto kit, and roller base. Although, the roller base is an option, it is recommended especially on the Cryosystem 6000.



NEW PRODUCTS – FULL AUTO KITS



If you have any questions please contact your MVE/Chart customer service representative @ 888 683-2796.

Any questions concerning your XLC freezer please contact Gil Edwards @ 770-720-6714.

E-mail gil.edwards@chart-ind.com

Questions concerning aluminum dewars can be directed to Jim Bachman at 952 758-8520.

E-mail jim.bachman@chart-ind.com

2002 Biological Calendar

AUG 11-13 TH , 2002	20 TH ANNUAL COLLEGE & UNIV HAZARDOUS WASTE CONF, IOWA STATE UNIV Ames, IA
AUG 24- 28, 2002	INTERNATIONAL SOCIETY OF HEMATOLOGY (ISH) 29 TH WORLD CONGRESS Seoul Korea
OCT 1 –6, 2002	WORLD DAIRY EXPO Alliant Energy Center, Madison, WI
OCT 2002	NATIONAL INSTITUTE OF HEALTH (NIH) Bethesda Maryland
OCT 12-16, 2002	AMERICAN SOCIETY OF REPRODUCTIVE MEDICINE (ASRM) Washington State Convention Center, Seattle WA
OCT 26 – 30,2002	AMERICAN ASSOCIATION OF BLOOD BANKS (AABB) Conventions Center, Orlando FL
DEC 6-10, 2002	AMERICAN SOCIETY OF HEMATOLOGY (ASH) Philadelphia PA

For copies of past Tech Tips or for more information on maintaining your nitrogen storage dewars please contact Jim Bachman at (952) 882-5168, Pager (612) 579-8367, Fax (952) 882-5175.